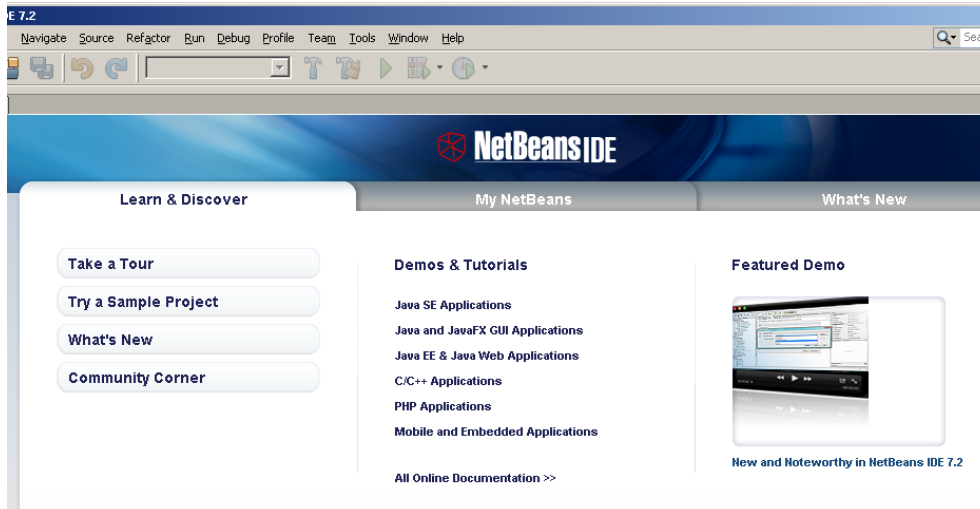
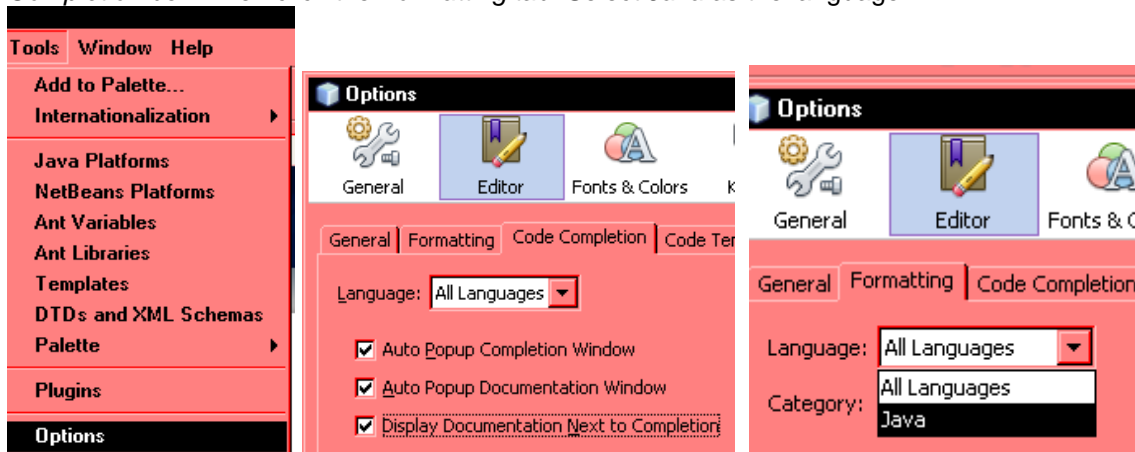


Getting Started with NetBeans .doc

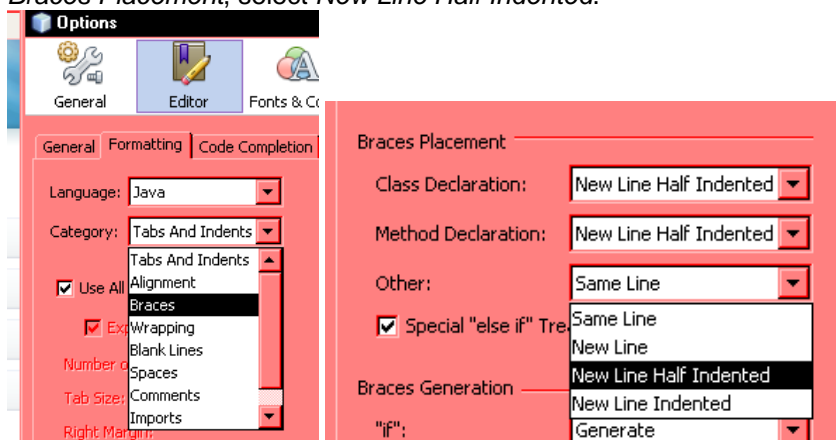
Configuring NetBeans



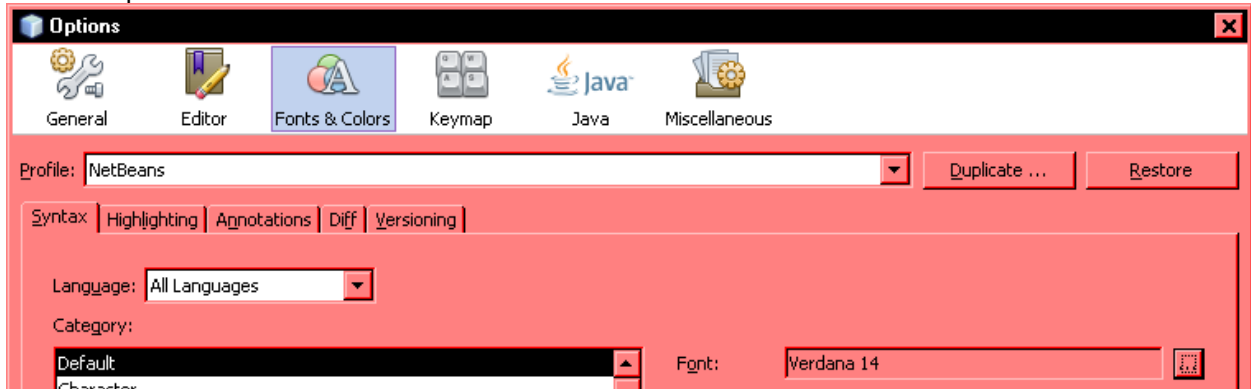
Tools → Options. Editor button (at top) → Code Completion tab → Check the *Display Document Next to Completion* box. Then click the *Formatting* tab. Select *Java* as the language.



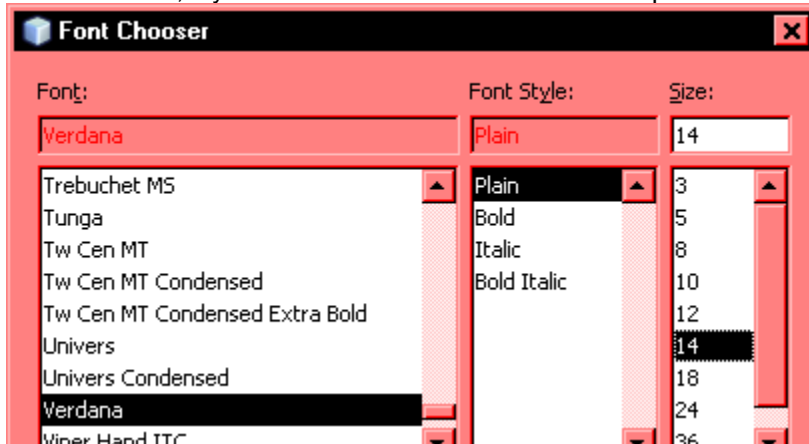
Edit button, *Formatting* tab: in the *Category* listbox choose *Braces*. In each of the three listboxes for *Braces Placement*, select *New Line Half Indented*.



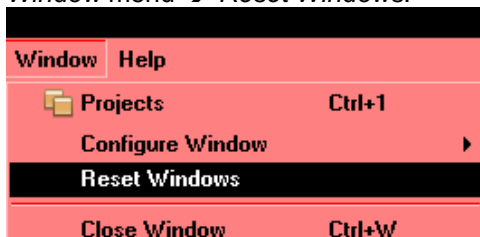
To change the default font: *Tools* menu → *Options* → click the *Fonts & Colors* button at top → select the *Syntax* tab → under *Category* select *Default*. To the right of that, click the three-dot button to the right of the *Font* option.



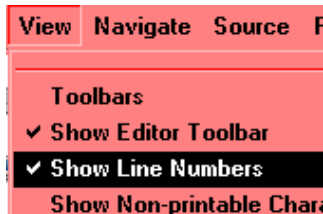
Select the font, style and size. Recommended font: 14 point Verdana plain



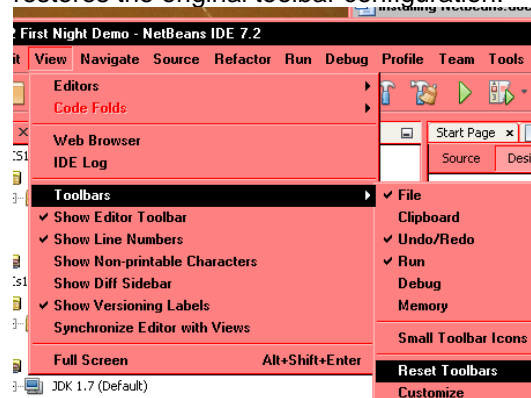
To restore the original layout of windows: *Window* menu → *Reset Windows*.



To show line numbers: *View* menu → *Show Line*



Similarly *View* menu → *Toolbars* → *Reset Toolbars* restores the original toolbar configuration.

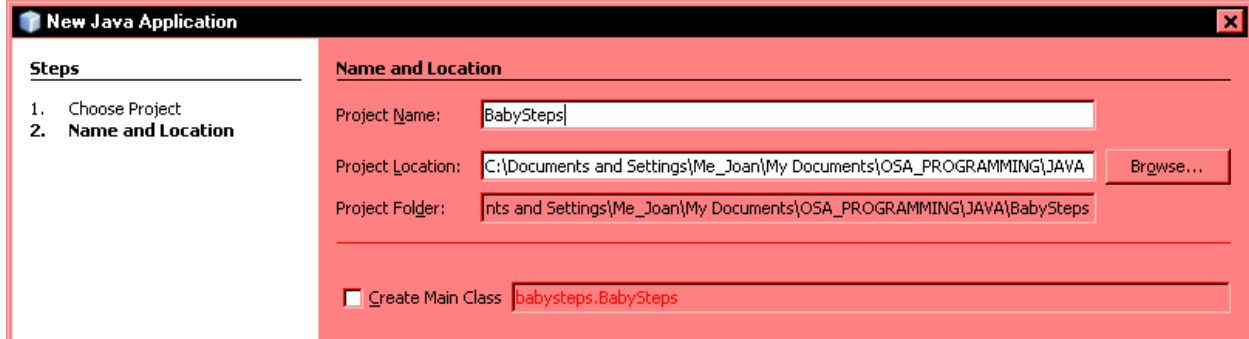


Creating a new GUI project

File menu → *New Project* (Ctrl+Shift+N). Under *Categories*, click *Java*. Under *Projects*, click *Java Applications* → Click the *Next* button.

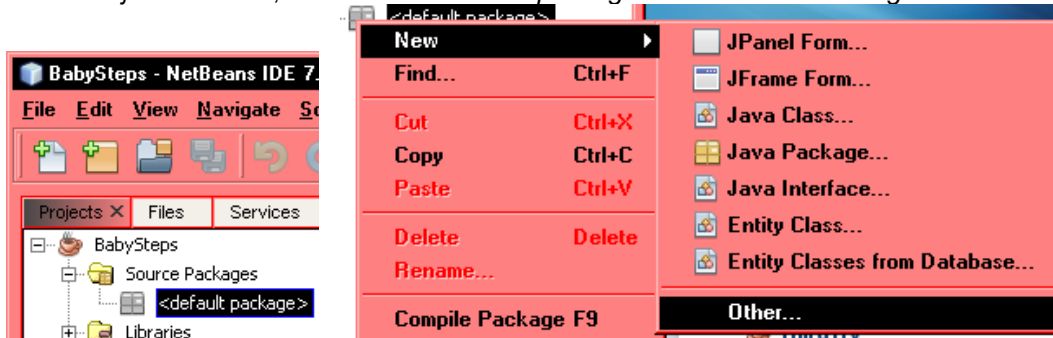


Enter a project name. **UNCHECK** the box for *Create Main Class*. At bottom, click the *Finish* button.

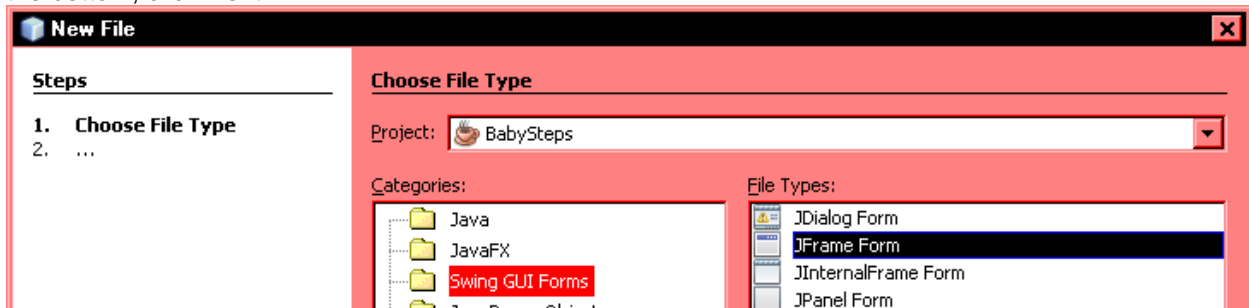


Creating a new form:

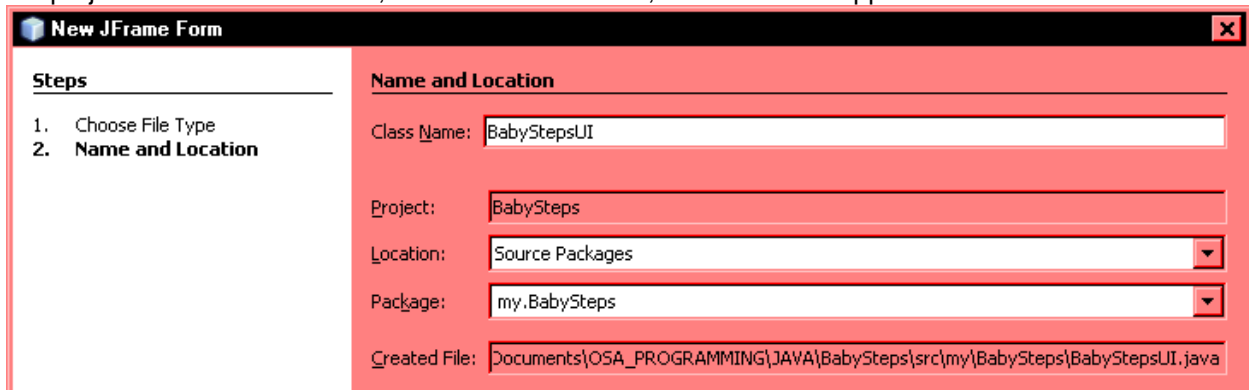
In the *Projects* window, click once on *default package* under *Source Packages*. Click on *New* and *Other...*



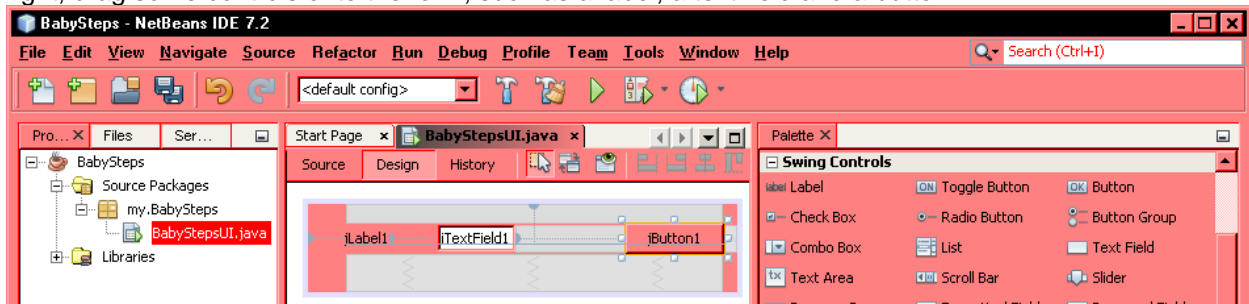
In the *New File* dialog, under *Categories*, click *Swing GUI Forms*. Under *File Types*, click *JFrameForm*. At the bottom, click *Next*.



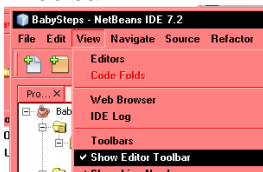
For the class name, enter the project name and append UI. For the package name, enter *my.* and append the project name. At the bottom, click Finish. The new, blank form will appear.



At left in the *Projects* window, the new form now appears: *BabyStepsUI.java*. From the swing controls at right, drag some controls onto the form, such as a label, a text field and a button.

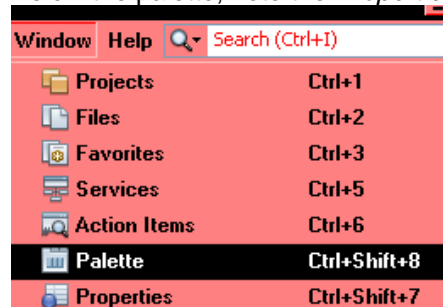


(Above, center:) note the *Source*, *Design* and *History* buttons. If they are not visible, View menu → *Show Editor Toolbar*.

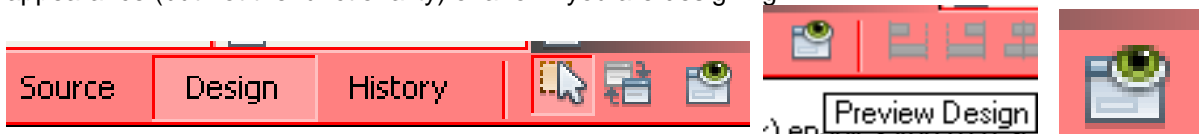


If the form is not visible, click the *Design* button. To view the source code, click the *Source* button. The *History* option lets you look at versions of the code or form as it appeared in previous days.

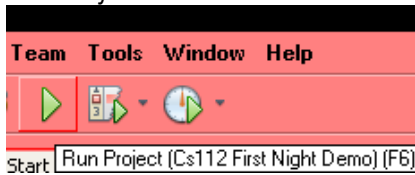
If the *Palette* window and the swing controls are not visible: *Windows* menu → *Palette* (Ctrl+Shift+8). Below the palette, note the *Properties* window.



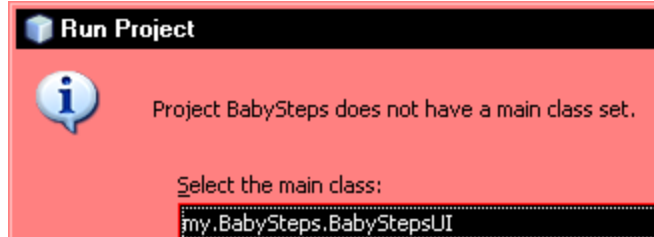
Another handy button on the *Editor* toolbar is the *Preview Design* button, which lets you preview the appearance (but not the functionality) of a form you are designing.



To run the project, click the green dart, the *Run Project* button—or press F6. You could also select *Run Project* from the *Run* menu.



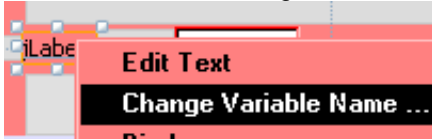
The first time you try this, you may see the following screen:



Click the class name. At the bottom, click OK.



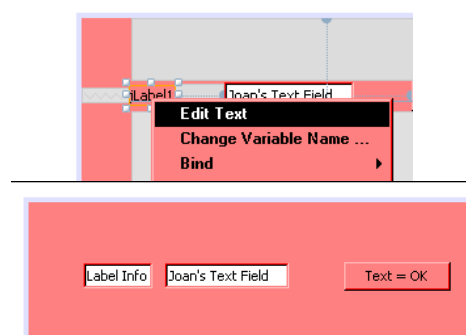
To change the name on a control (e.g. a label): Right-click it and select *Change Variable Name*.



Enter the new name:



To change the text of a control: right-click the control, choose *Edit Text*,



Close a project, transfer it to a flash drive

To close a project, right-click its name in the *Projects* window and select *Close*.

To transfer a project to the flash drive, first close it in NetBeans. Then in the folder containing your Java projects, click once on the project. Right click and choose *Send to*. On the secondary menu, select a destination, such as a flash drive.

