

# Overview and Introduction to Embedded Systems

# What is an Embedded System?

---

- Any electronic device that incorporates a computer in its implementation.
- The user of the device is often not even aware that a computer is present.
- The computer is used primarily to provide flexibility and to simplify the system design.

# Some Interesting Examples of Embedded Systems...

---



**Product: Sonicare Elite toothbrush.**

**Microprocessor: 8-bit**

**Has a programmable speed control, timer, and charge gauge**



**Product:Vendo Vue  
40 vending  
machine.**

**Microprocessor:  
Two 16-bit Hitachi  
H8/300H  
Processors**

**A robot hand  
dispenses items**

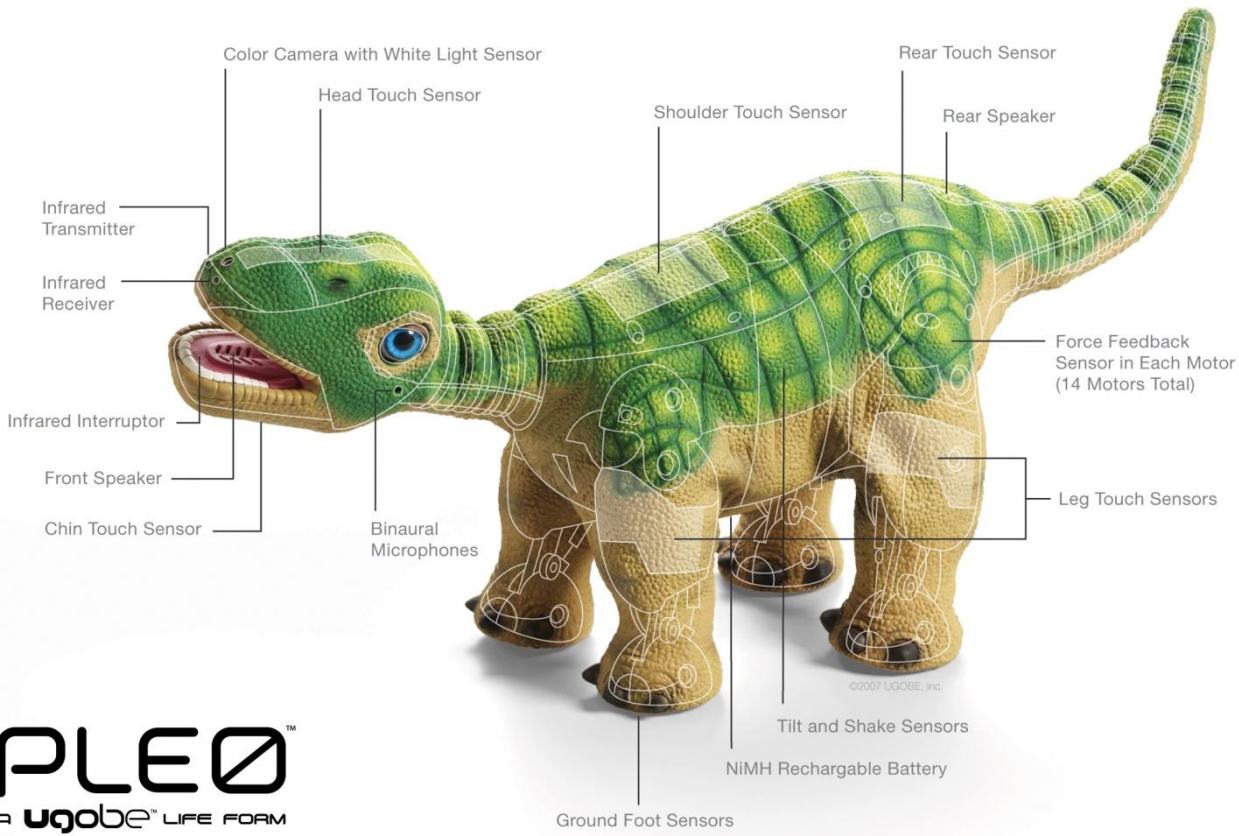


**Product: Sony Aibo  
Robotic Dog.**

**Microprocessor: 64-bit  
MIPS R7000.**

**OS: Aperios - Sony's  
Real Time OS**

**Used in Robocup Soccer  
Teams**



**Product: Pleo  
robotic toy  
dinosaur**

**Processors:  
two 32-bit  
(main is ARM)  
and four 8-bit  
microcontrollers**

**PLEO™**  
A **ugobe™** LIFE FORM



**Product: Radiant Systems  
Point-of-Sale (POS)  
Terminal**

**Microprocessor:  
Intel X86 Celeron**

**OS: Windows XP Embedded**

**Look for one next time you  
order fast food!**





**Product: High End  
Systems DL2 Digital Media  
Server**

**Microprocessor: X86**

**OS: Windows XP  
Embedded**

**Used for lighting effects in  
shows and rock concerts**

**Product: Microsoft's Smart Personal Object Technology (SPOT) watch**

**Microprocessor: 32-bit ARM with FM Radio Chip**

**Downloads News using extra bandwidth on FM radio stations in major cities**





**Kuka robot arms welding a Mercedes**

**Product: Kuka  
Industrial Robot Arm**

**Microprocessor: X86**

**OS: Windows CE OS &  
Others**



**Product: IBM Self  
Checkout Station**

**Microprocessor: X86**

**OS: Windows  
Embedded Point of  
Service (XP)**



**Product: LagoTek  
Home Automation  
Controller**

**Microprocessor:  
ARM + DSP**

**OS: Windows CE**



**Product: Motorola MOTO Q9h Global Smartphone**

**Microprocessor: TI OMAP (ARM + DSP)**

**OS: Windows Mobile 6 (CE)**



**Product: Atronic Slot Machine**

**Microprocessor: X86**

**OS: Windows CE**

**Slots are networked to a casino's back office computer system. State Gaming agencies audit code and payoff odds.**



**Product: Dresser Wayne Ovation iX  
Gas Pump**

**Microprocessor:  
Marvel Xscale (ARM)**

**OS: Windows CE**

**Displays video ads &  
is networked to a gas station's back  
office computer system. Also has  
remote maintenance features.**



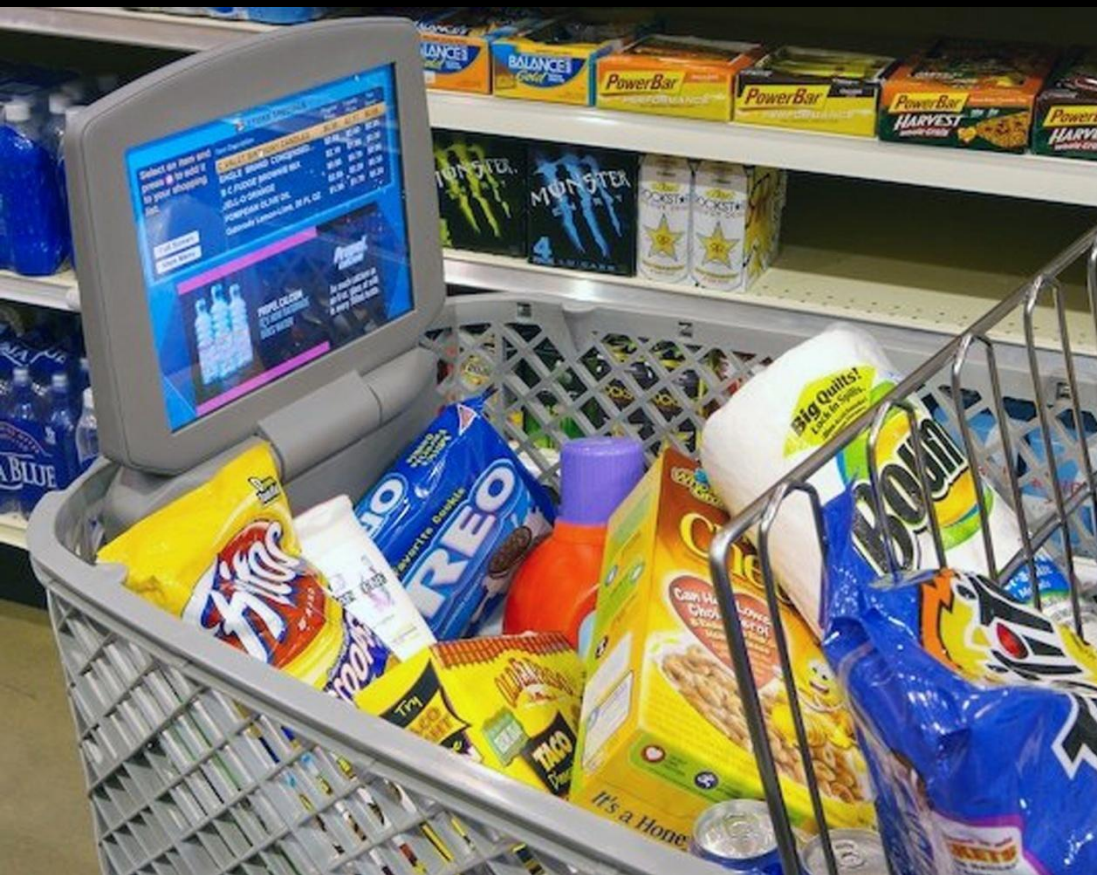


**Product: Ford Sync**

**Microprocessor: ARM**

**OS: Windows Mobile  
(CE)**





**Product: MediaCart**

**OS: Windows CE**



## **Product: Next Generation of Washers and Dryers**

**Whirlpool, HP, and  
Microsoft recently  
tested Wi-Fi enabled  
appliances that send  
alerts**



## **Product: Toto Intelligence Toilet**

**It measures urine sugar, blood pressure, body fat and weight on a daily basis. This data can be transferred over the network.**



**Product: S class  
Mercedes**

**Microprocessors:  
around 100  
embedded  
processors !**



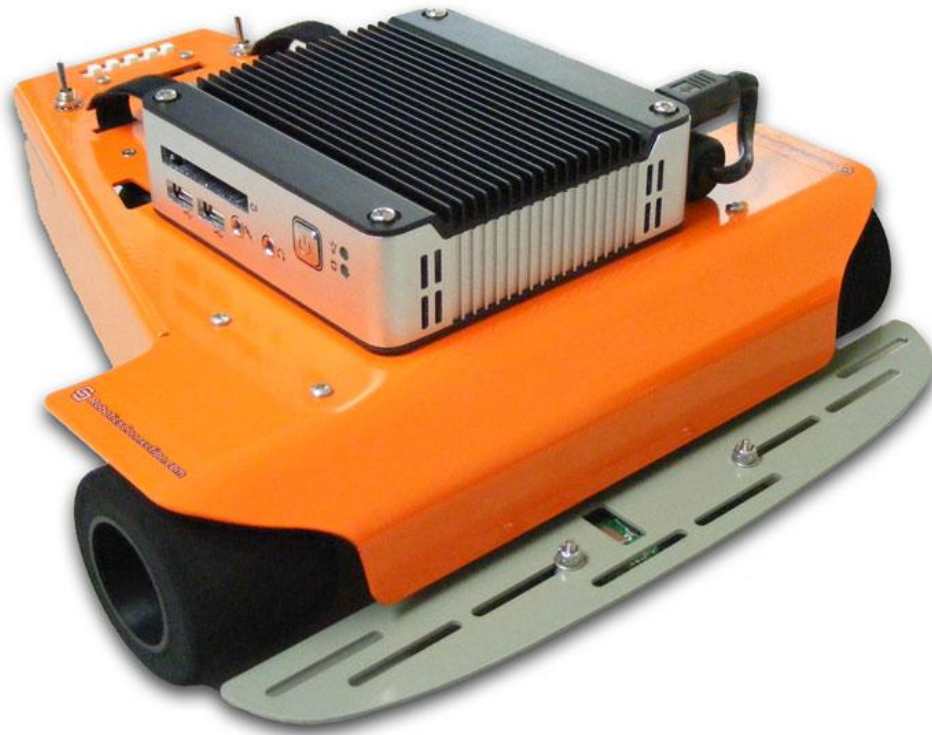
**Product: ICOP eBox 4300 PC**  
**4.5 x 4.5 x 1.5 inches**

**Microprocessor:**  
**500Mhz Via Eden (X86)**

**OS: Windows CE**

**Low-cost CE target board for  
student projects**





**Product: Stinger Robot  
Kit from Robotics  
Connection**

**Microprocessor: X86  
eBox**

**OS: Windows CE 6.0**

# More Examples of Embedded Systems

<b>Aircraft &amp; Military Systems</b>	Aircraft autopilots, avionics and navigation systems, automatic landing systems, guidance systems, engine controls.
<b>Biomedical</b>	XRAY, MRI, and Ultrasound imaging systems, patient monitors, heart pacers.
<b>Cars</b>	Engine control, anti-lock braking systems, traction control systems, air bag controls, heating and air conditioning controls, GPS mapping, Satellite Radio, On-board Diagnostics.
<b>Communications</b>	Communication Satellites, network routers, switches, hubs.



# Examples of Embedded Systems - Continued

<b>Computer I/O devices</b>	Keyboards, mice, printers, scanners, displays, modems, hard disk drives, DVD drives, graphics cards, USB devices.
<b>Electronic Instrumentation</b>	Data acquisition systems, oscilloscopes, voltmeters, signal generators, logic analyzers.
<b>Home Electronics</b>	Microwave ovens, dishwashers, DVD players, televisions, stereos, security systems, lawn sprinkler controls, thermostats, cameras, TVs, clock radios, answering machines, satellite or cable box, appliances.
<b>Industrial Equipment</b>	Elevator controls, surveillance systems, robots, CNC machines, Programmable Logic Controllers, industrial automation and control systems.

# Examples of Embedded Systems - Continued

<b>Office Machines</b>	FAX machines, copiers, telephones, calculators, cash registers.
<b>Personal Devices</b>	Cell phones, portable MP3 players, Video players, Personal Digital Assistants (PDAs), electronic wrist watches, handheld video games, digital cameras, GPS systems.
<b>Robots</b>	Industrial robots, autonomous vehicles, space exploration robots (i.e. Mars robots)
<b>Toys</b>	Video Game systems, “Aibo”, “Furby”, “Elmo”, and “Pleo” type robotic toys.